



## Internet Explorer Settings for Finacle UBS



*INFOSYS TECHNOLOGIES LIMITED  
Bangalore, India*

## Document Revision History

Author	Document Version	Reviewed By	Date
Mahantesh N Goture	0.00a	Anupkumar Murulidhara Putane	April 6, 2009
Mahantesh N Goture	1.0	Anupkumar Murulidhara Putane	April 27,2009
Sudarsan K.	2.0		December 14, 2009
Lekha R	3.0		December 17, 2009
Sudarsan K.	4.0		December 03, 2010
Sudarsan K	5.0		April 30, 2012
Sudarsan K	6.0		June 20, 2012
Vimal Damodaran	7.0	Sudarsan K	August 7, 2012
Sudarsan_k	8.0		August 12, 2013
Sudarsan_k	9.0		December 11, 2014
Sudarsan_k	10.0		May 12, 2015

The information contained in this document is subject to change without notice. All software products or brand names are trademarks or registered trademarks of their respective companies or organizations.

## Contents

Contents.....	3
1. Introduction.....	4
2. Finacle UBS Internet Explorer Settings.....	5

Finacle UBS

# 1. Introduction

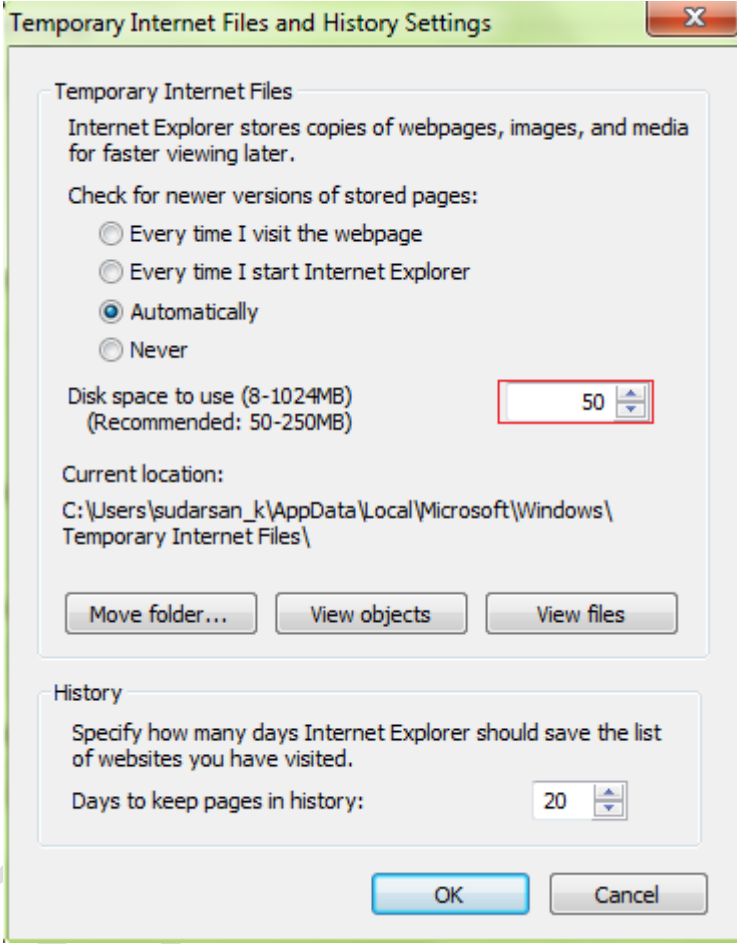
This document explains Internet Explorer settings for Finacle UBS installation 10.1.x, 10.2.x, 10.3.x, 10.4.x, 10.5.x, 10.6.x, 11.x. This document explains Internet Explorer (version IE6.0 SP2 to the latest IE) Settings for applications in Finacle UBS suite.

Pl. refer to “Finacle\_UBS\_Internet\_Explorer\_Ver8\_Dos\_and\_Donts.doc” for certain “Do and Don’ts for IE version 8 and above browsers”

Finacle UBS

## 2. Finacle UBS Internet Explorer Settings.

Please follow the below Internet Explorer settings for Finacle applications.

Step	Description
1.	<p>Click on Tools → Internet Options → Settings and select automatically radio as shown below figure 1.</p>  <p>Figure 1</p>
2.	<p>Ensure that cache storage size is minimum <b>50MB</b>. Please refer Figure 1 (step 1)</p>

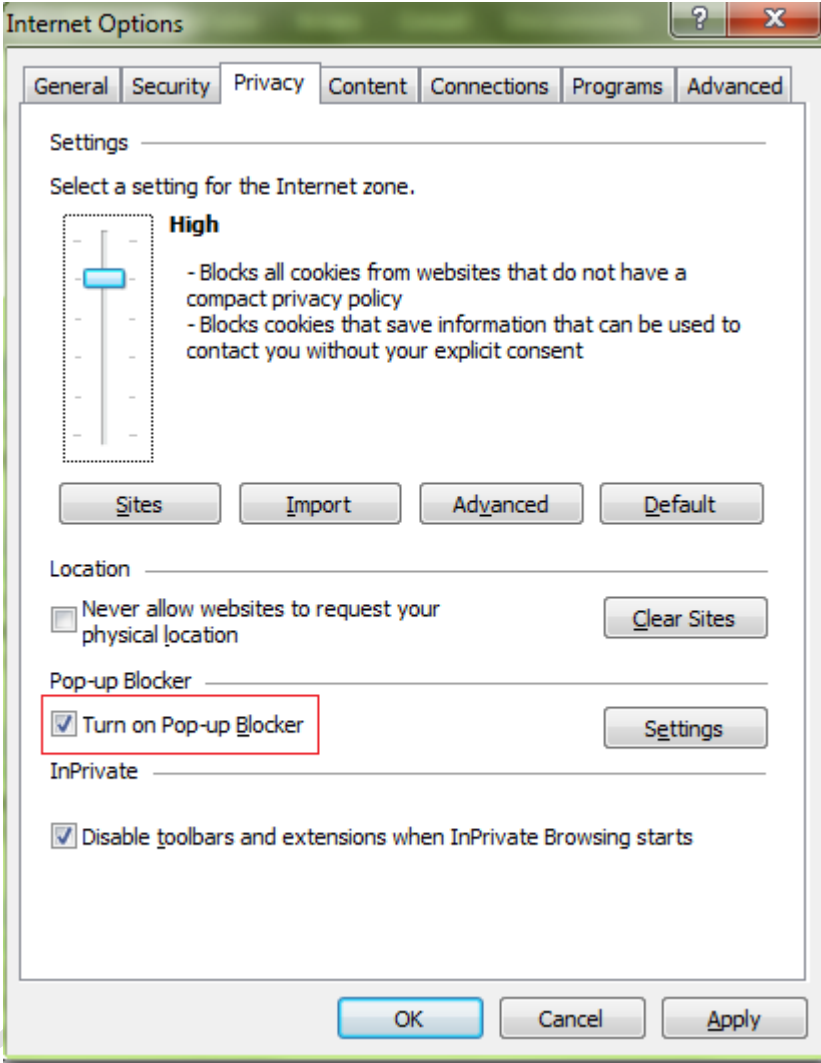
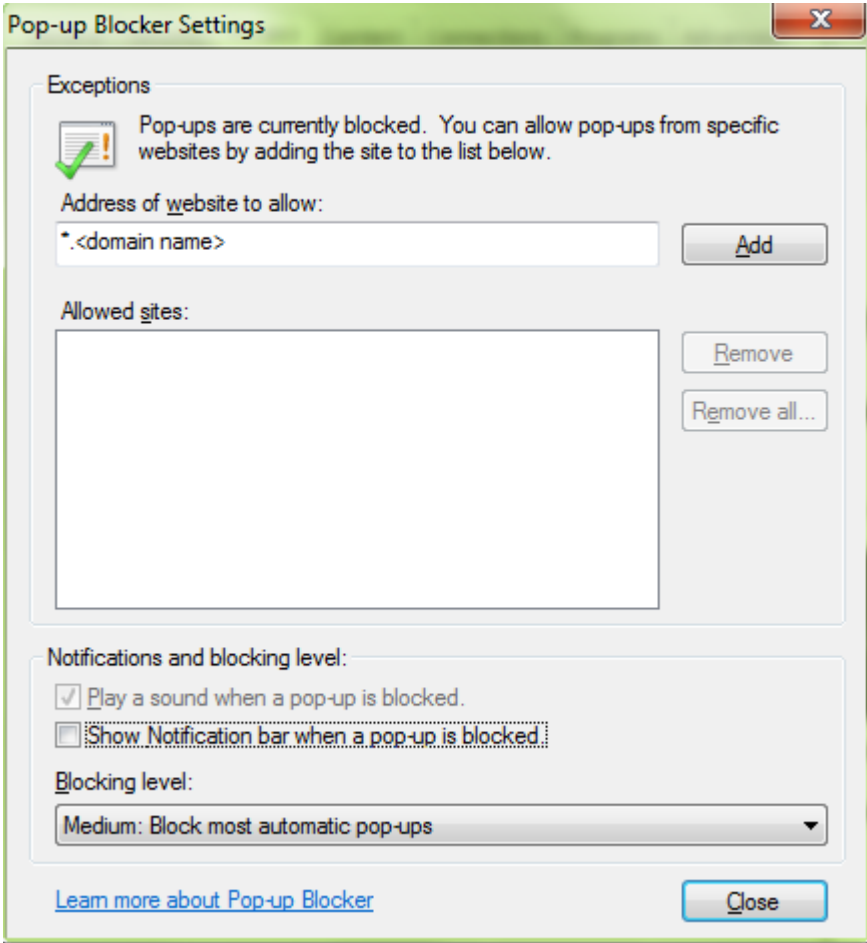
Step	Description
3.	<p>Click on the Privacy tab and click the Default Level button. Finacle needs pop-ups facility to be enabled. Our recommendation is to enable Block pop-ups (or Turn on Popup Blocker) as shown in the below figure 2 and add *&lt;bank domain name&gt; to Allowed sites list as shown in the below figure 3.</p>  <p>The screenshot shows the 'Internet Options' dialog box with the 'Privacy' tab selected. The 'Settings' section shows a slider set to 'High'. Below the slider, there are buttons for 'Sites', 'Import', 'Advanced', and 'Default'. The 'Location' section has a checkbox for 'Never allow websites to request your physical location' and a 'Clear Sites' button. The 'Pop-up Blocker' section has a checked checkbox for 'Turn on Pop-up Blocker' (highlighted with a red box) and a 'Settings' button. The 'InPrivate' section has a checked checkbox for 'Disable toolbars and extensions when InPrivate Browsing starts'. At the bottom are 'OK', 'Cancel', and 'Apply' buttons.</p>

Figure 2

Step	Description
	 <p>Figure 3</p>

Step	Description
4.	<p>Please set the below Privacy settings.                      Move the slider bar up set to <b>High</b> (please refer Figure 4)</p> <ol style="list-style-type: none"> <li>1. Click on <b>Sites</b>.</li> <li>2. Type *.&lt;domain name&gt; in the Address of Web site box. Example : bankdomain.com</li> <li>3. Click on <b>Allow</b> and make sure you see *.&lt;domain name&gt; with the Always Allow setting in the Managed Web Sites box as shown in figure 5.</li> </ol>

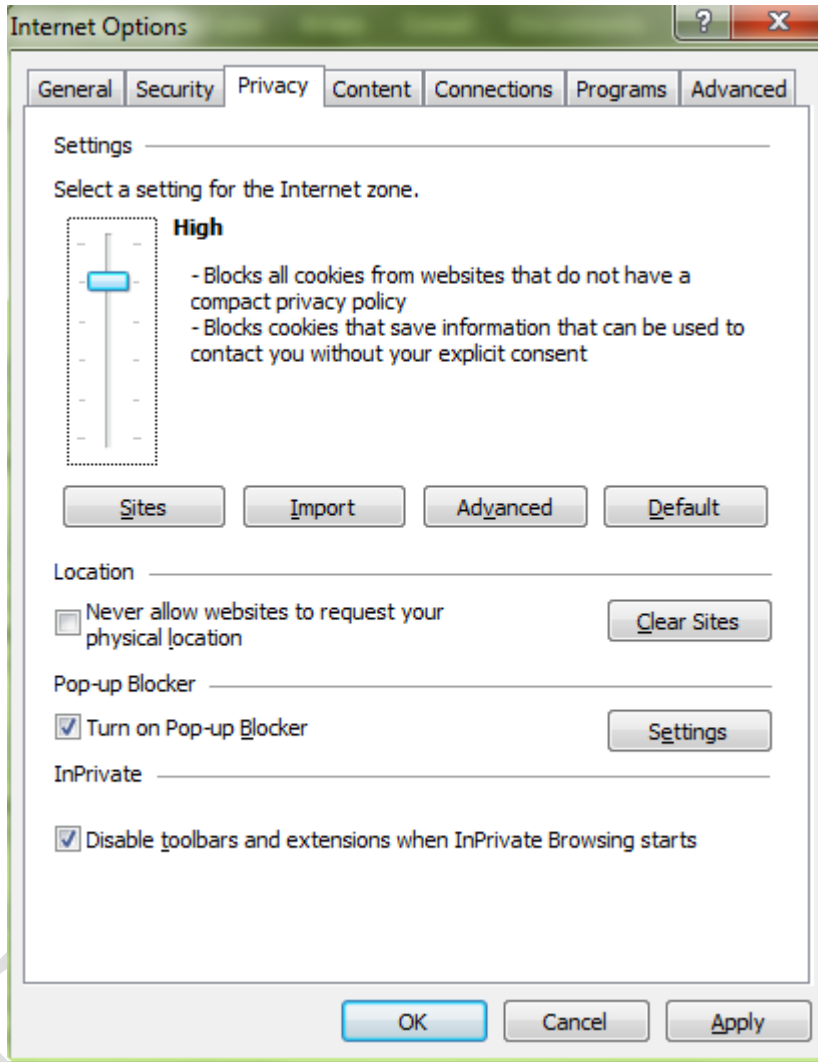


Figure 4



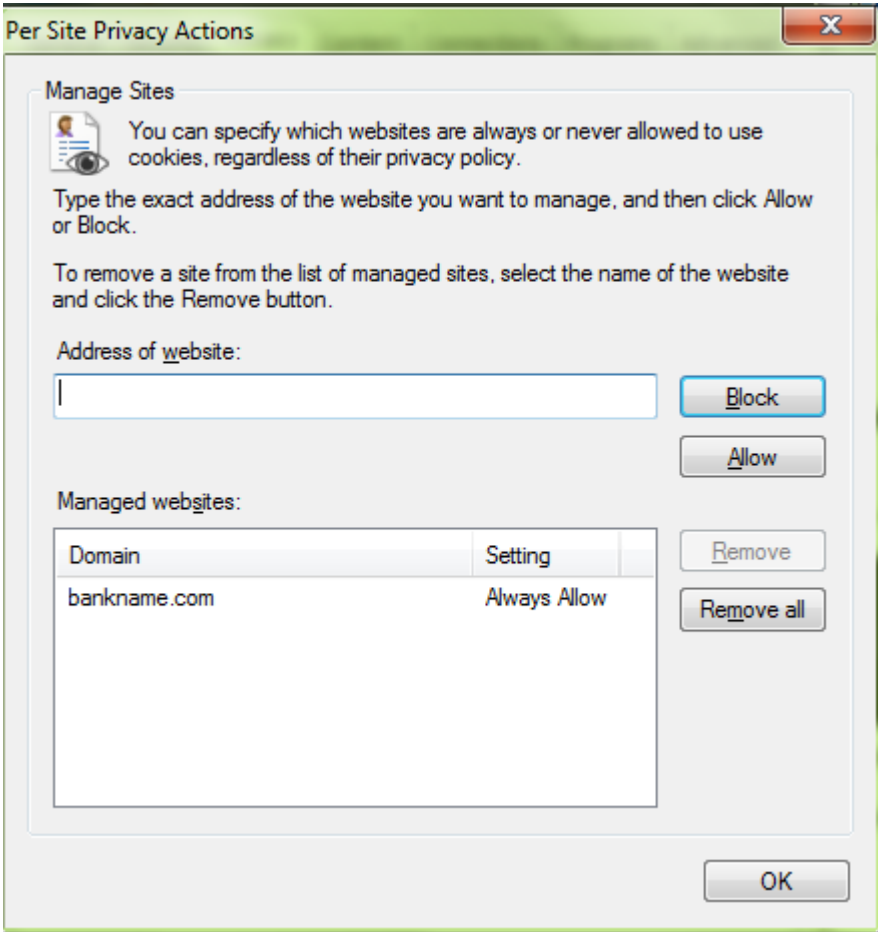
Step	Description				
	 <p><b>Per Site Privacy Actions</b></p> <p><b>Manage Sites</b></p> <p>You can specify which websites are always or never allowed to use cookies, regardless of their privacy policy.</p> <p>Type the exact address of the website you want to manage, and then click Allow or Block.</p> <p>To remove a site from the list of managed sites, select the name of the website and click the Remove button.</p> <p>Address of website:</p> <p>Block Allow</p> <p>Managed websites:</p> <table border="1"> <thead> <tr> <th>Domain</th> <th>Setting</th> </tr> </thead> <tbody> <tr> <td>bankname.com</td> <td>Always Allow</td> </tr> </tbody> </table> <p>Remove Remove all</p> <p>OK</p>	Domain	Setting	bankname.com	Always Allow
Domain	Setting				
bankname.com	Always Allow				

Figure 5

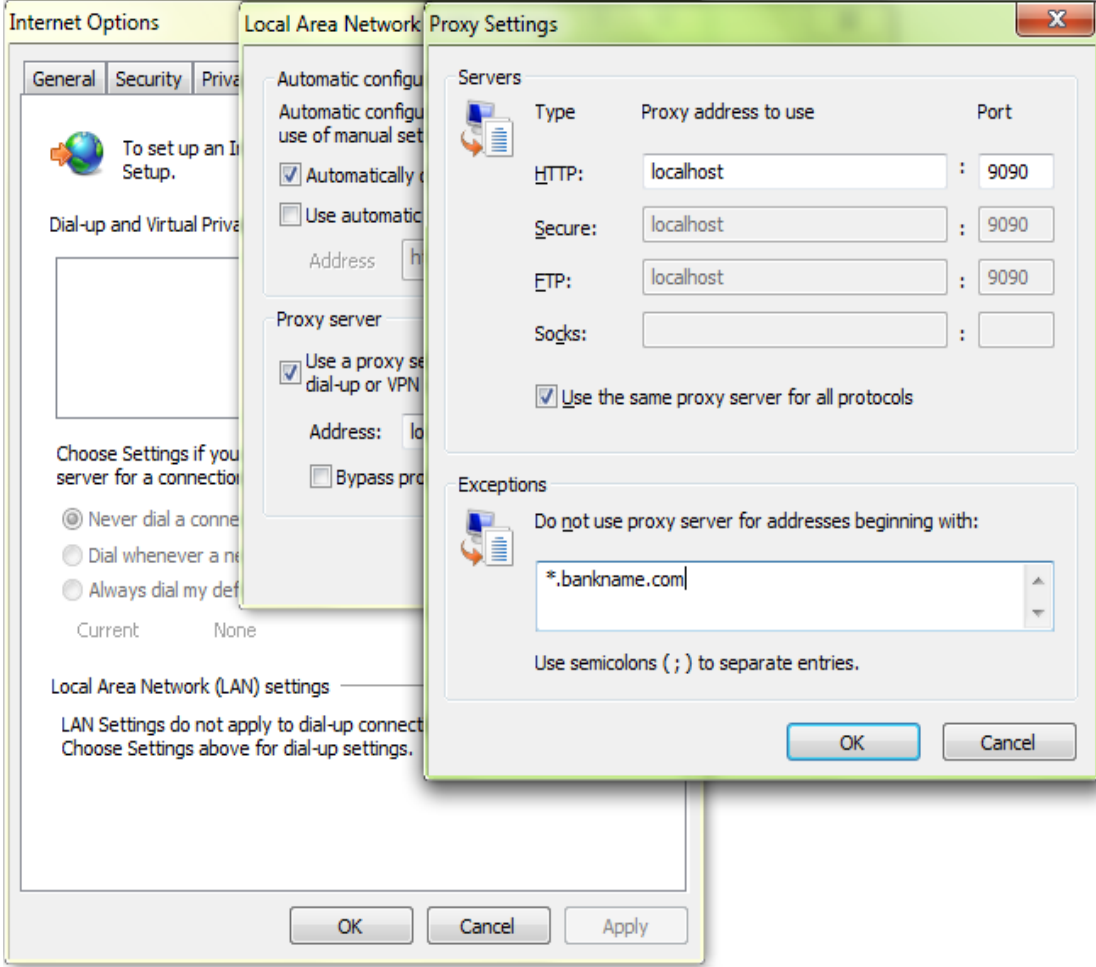
Step	Description															
5.	<p>Please perform this step only when Proxy server is configured. Click on the <b>Connections</b> tab and <b>LAN Settings</b>. If proxy is enabled, then add entry for <b>*.&lt;domain name&gt;</b> in "Do not use proxy" box. Please specify the bank URL here example <b>*.bankdomain.com</b>. Please refer below figure 6.</p>  <p>The screenshot shows three overlapping windows from the Windows Internet Options dialog. The 'Proxy Settings' window is the most prominent, showing a table of proxy servers:</p> <table border="1" data-bbox="710 481 1364 862"> <thead> <tr> <th>Type</th> <th>Proxy address to use</th> <th>Port</th> </tr> </thead> <tbody> <tr> <td>HTTP:</td> <td>localhost</td> <td>9090</td> </tr> <tr> <td>Secure:</td> <td>localhost</td> <td>9090</td> </tr> <tr> <td>FTP:</td> <td>localhost</td> <td>9090</td> </tr> <tr> <td>Socks:</td> <td></td> <td></td> </tr> </tbody> </table> <p>Below the table, the checkbox 'Use the same proxy server for all protocols' is checked. The 'Exceptions' window below it shows the text '*.bankname.com' entered in the 'Do not use proxy server for addresses beginning with:' field.</p>	Type	Proxy address to use	Port	HTTP:	localhost	9090	Secure:	localhost	9090	FTP:	localhost	9090	Socks:		
Type	Proxy address to use	Port														
HTTP:	localhost	9090														
Secure:	localhost	9090														
FTP:	localhost	9090														
Socks:																

Figure 6

Step	Description
------	-------------

- |    |   |
|----|---|
| 6. | <p>Click on <b>Advanced</b> tab and select the following settings (if already not selected)</p> <ol style="list-style-type: none"> <li>1. "Use HTTP 1.1" setting under HTTP 1.1 settings (please refer figure 7 below)</li> <li>2. "Use JRE xxx" under Java(Sun) (If available)</li> <li>3. "Use SSL 3.0" under Security. Please refer figure 8.</li> </ol> |
|----|---|

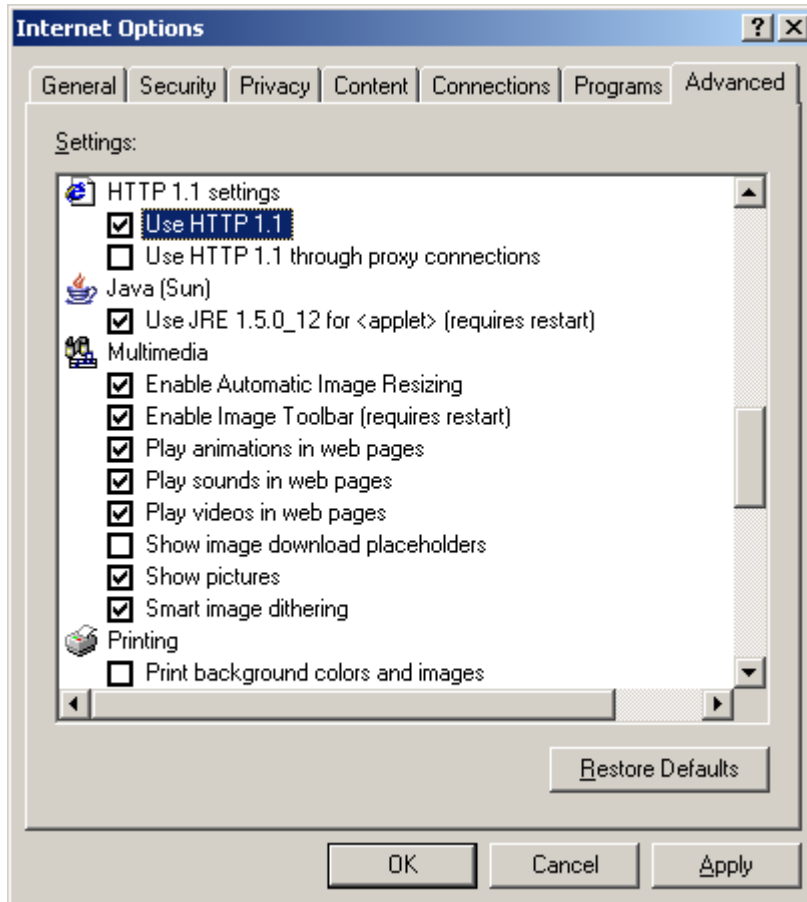


Figure 7

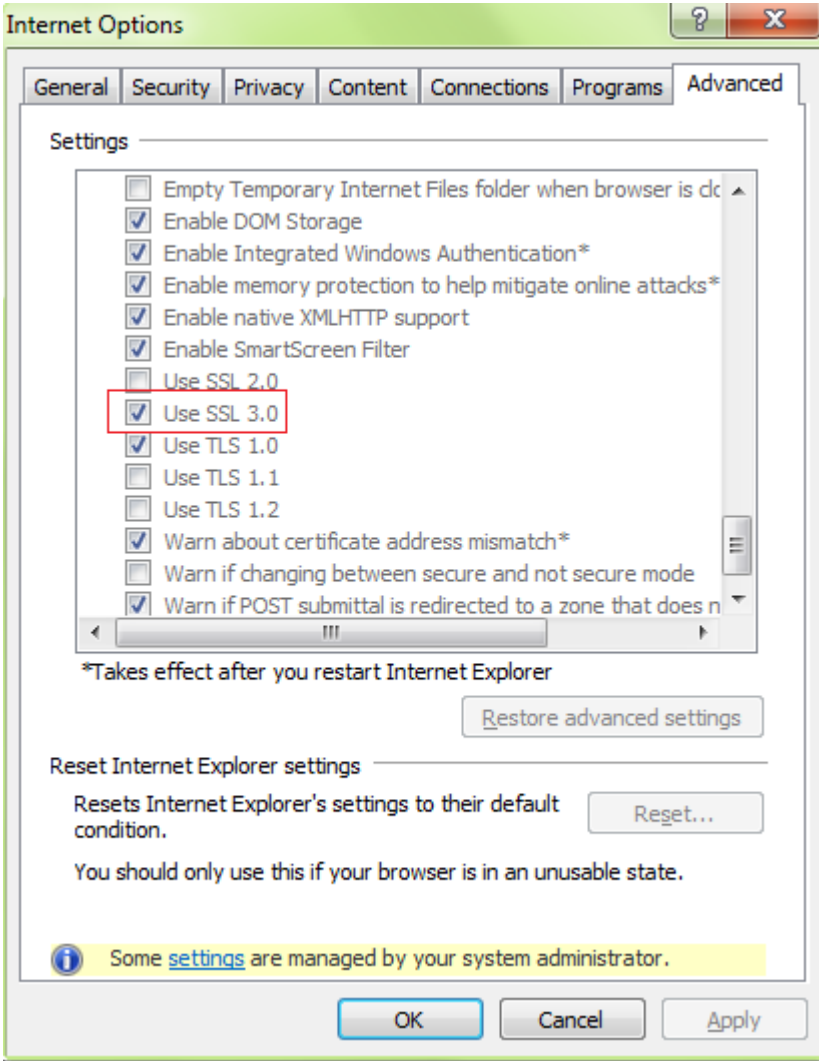
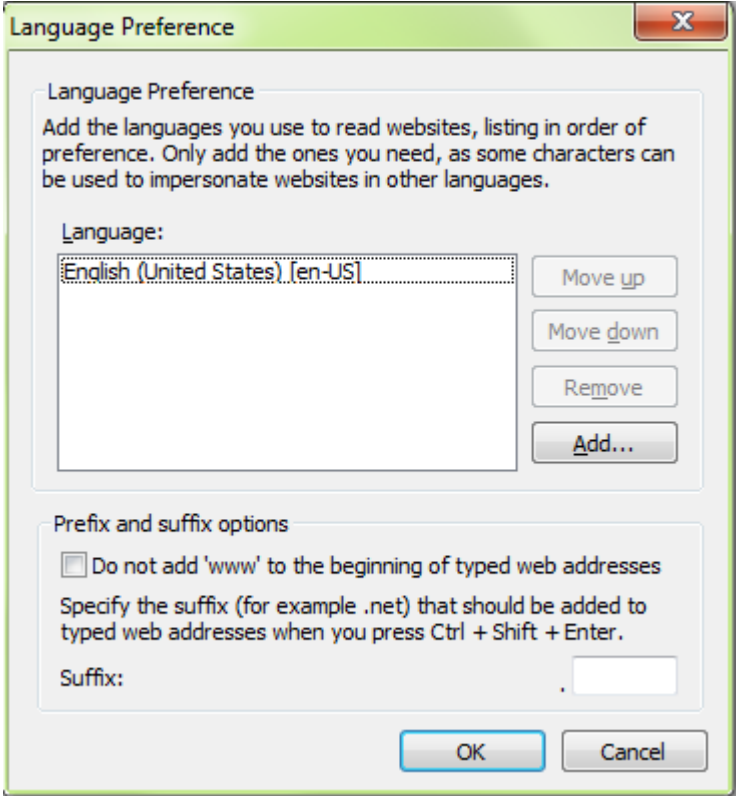
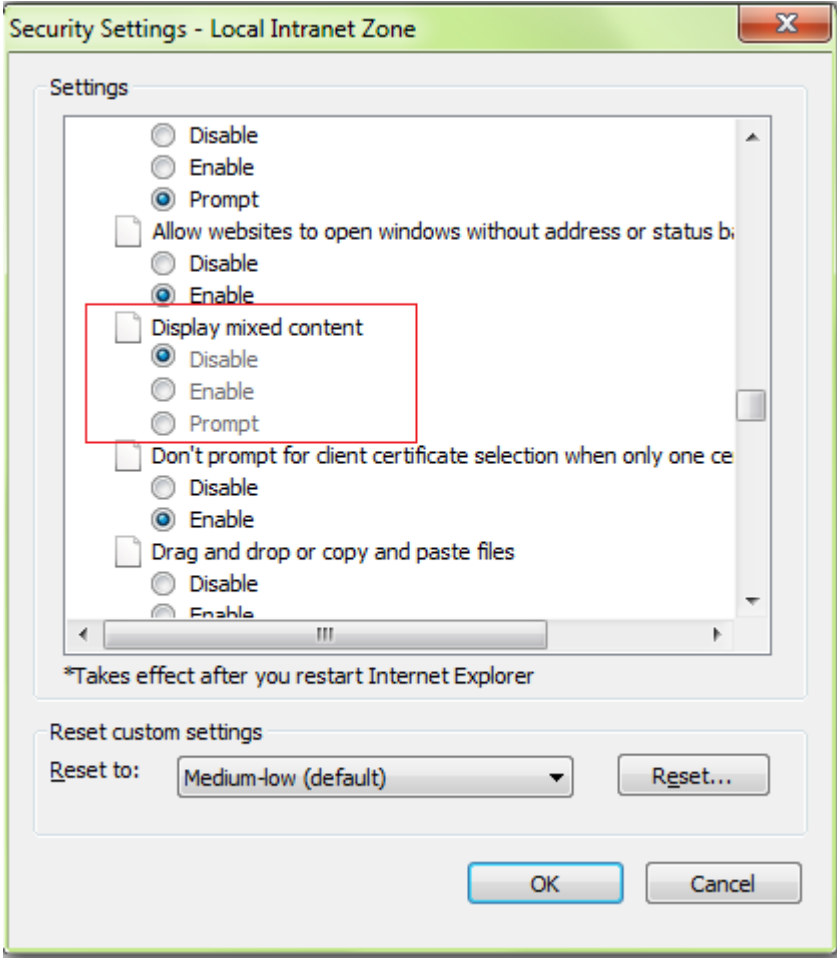
Step	Description
7.	 <p>The screenshot shows the 'Internet Options' dialog box with the 'Advanced' tab selected. In the 'Settings' section, the 'Use SSL 3.0' checkbox is checked and highlighted with a red rectangular box. Other checked options include 'Enable DOM Storage', 'Enable Integrated Windows Authentication*', 'Enable memory protection to help mitigate online attacks*', 'Enable native XMLHTTP support', 'Enable SmartScreen Filter', 'Use TLS 1.0', 'Warn about certificate address mismatch*', and 'Warn if POST submittal is redirected to a zone that does not have an approved certificate authority'. Unchecked options include 'Empty Temporary Internet Files folder when browser is closed', 'Use SSL 2.0', 'Use TLS 1.1', and 'Use TLS 1.2'. Below the settings list, there is a note: '*Takes effect after you restart Internet Explorer'. At the bottom of the dialog, there are buttons for 'Restore advanced settings', 'Reset...', 'OK', 'Cancel', and 'Apply'. A yellow information bar at the bottom states: 'Some settings are managed by your system administrator.'</p>

Figure 8

Step	Description
8.	<p>Locale settings in browser: Click on Tools → Internet Options → Languages ... The default language must be en_us as shown below figure 9.</p>  <p>Figure 9</p>

Step	Description
9.	<p>Go to Tools → Internet Options → Security → Local Internet → Custom Level → Miscellaneous → Display Mixed Content → Disable should be checked as shown below figure 10.</p>  <p>Figure 10</p>

Step	Description
10	Go to Tools> Internet Options >> Advanced > Browsing> Display notification about every script error – Should be unchecked (not sure about default value) as shown below figure 11.

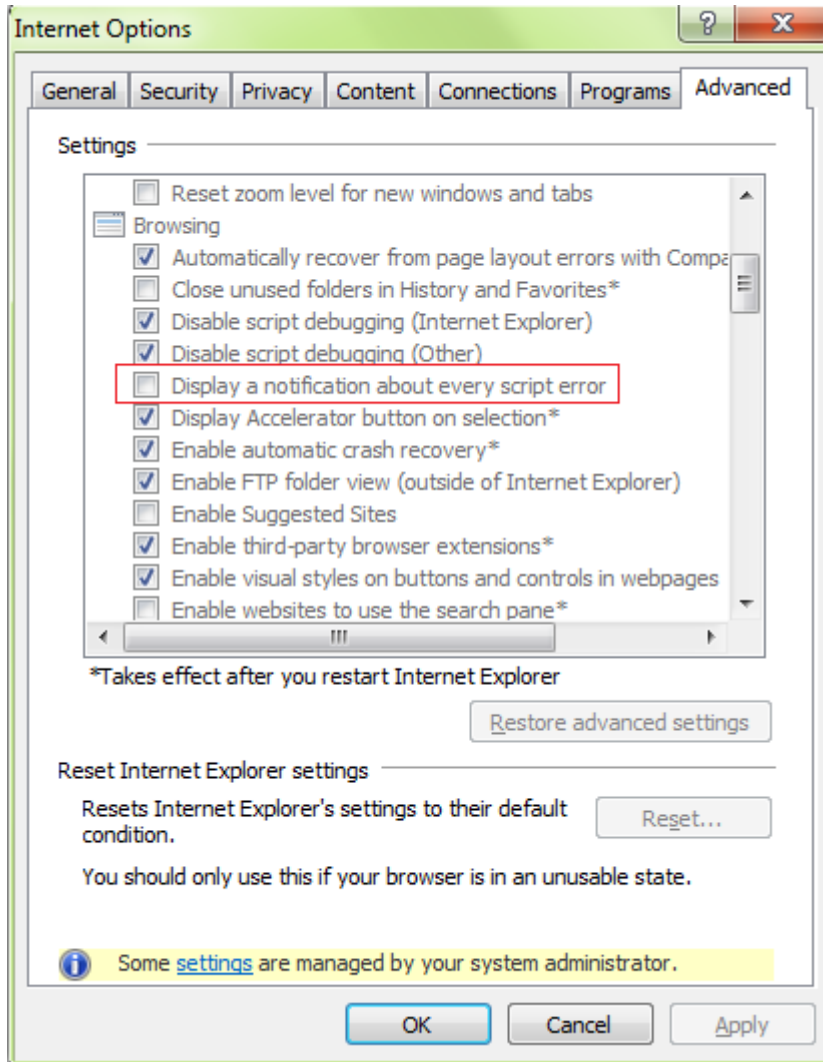
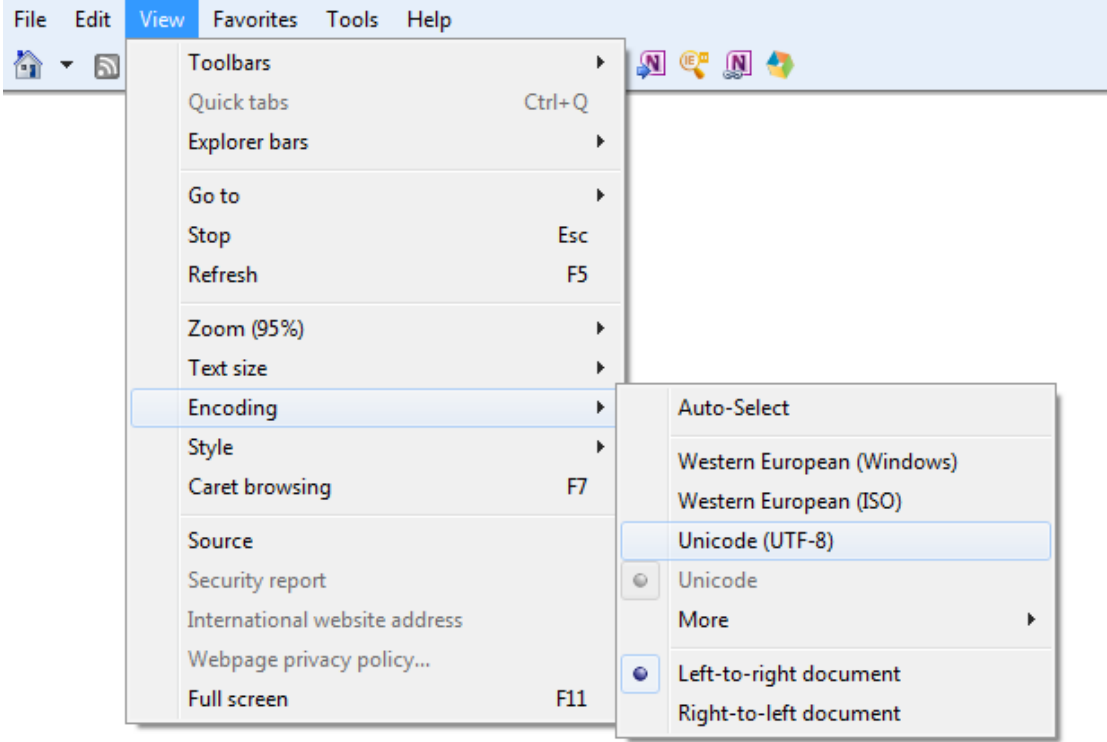


Figure 11

11	Click on <b>Apply</b> and then <b>OK</b> .
----	--

Step	Description
12	<p>Click on <b>View</b> → <b>Encoding</b> and select <b>Unicode (UTF-8)</b> as shown in the below figure 12.</p>  <p>The screenshot shows the Internet Explorer browser interface. The 'View' menu is open, and the 'Encoding' option is selected. The 'Encoding' submenu is also open, showing the following options: Auto-Select, Western European (Windows), Western European (ISO), Unicode (UTF-8) (which is highlighted), Unicode, More, Left-to-right document, and Right-to-left document.</p>
<p>Figure 12</p>	

Finacle



**Step Description**

13 For IE browsers version 8 and above, do the following setting.

Tools > Internet Options > Security > Internet/Local Intranet Zone > Custom Level > Settings > User Data Persistence > Enable the setting.  
figure 13a & 13b.

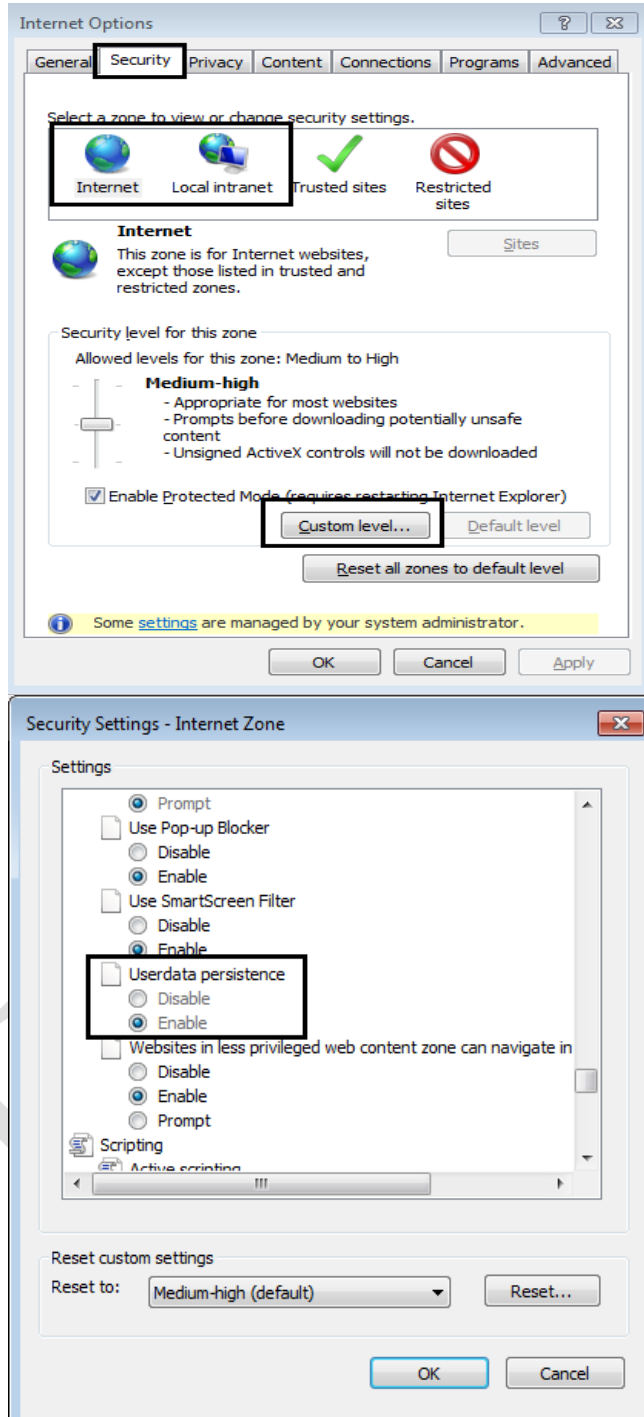


Figure 13a, 13b.

Step	Description
14	<p>If the above mentioned settings are already done as part of the organization’s software hardening process, make sure of the following is done specifically for IE versions above 8.0.</p> <p>Go to Tools &gt; Internet Options &gt; Security tab, the buttons “Default Level” and “Reset all zones to default level” should be disabled as shown in the below figure 14.</p>

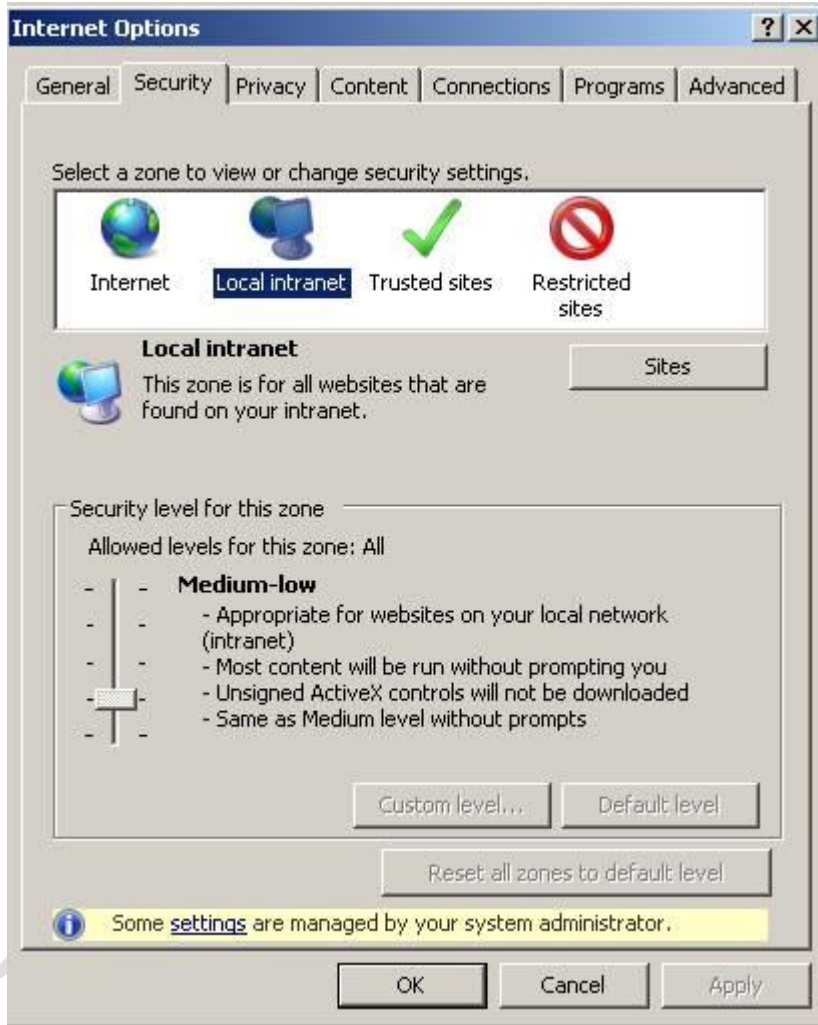


Figure 14

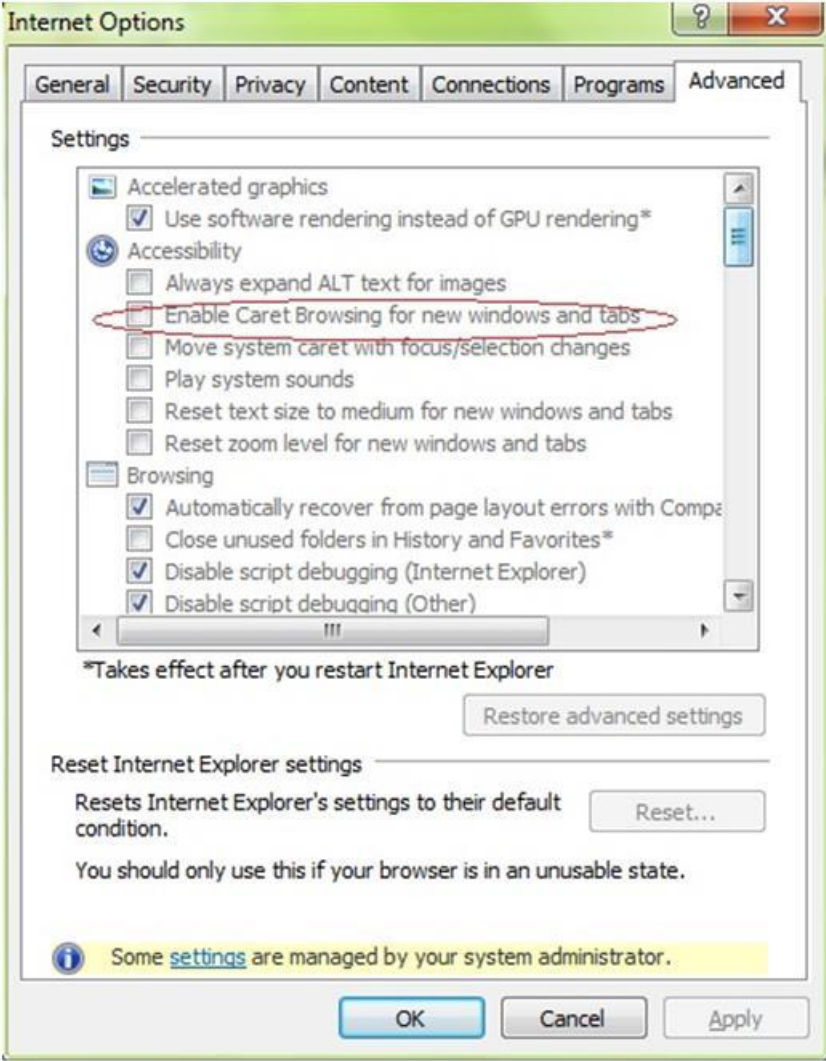
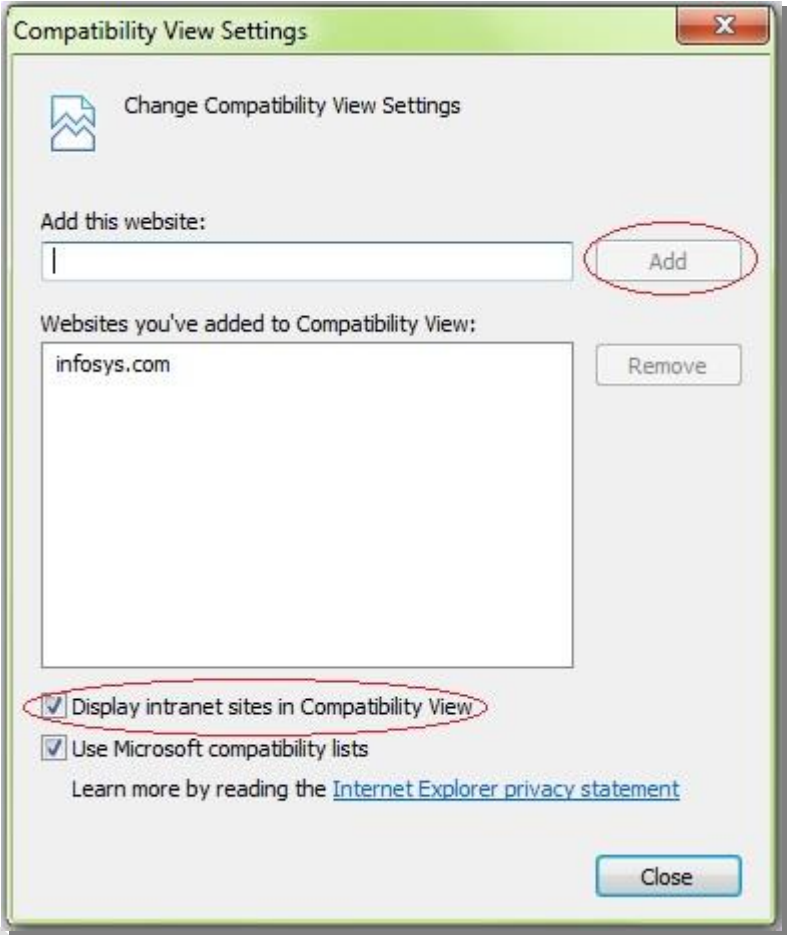
Step	Description
15	<p>The below mentioned setting applicable to IE9 and above. Users should not be allowed to enable this setting or it should be done as part of organisation's software hardening process.</p> <p>Go to Tools-&gt;Internet Options-&gt;Advanced tab, under "Accessibility" section "Enable Caret browsing for new windows and tabs" should be disabled as shown below in figure 15.</p>  <p>The screenshot shows the 'Internet Options' dialog box with the 'Advanced' tab selected. Under the 'Accessibility' section, the checkbox 'Enable Caret Browsing for new windows and tabs' is circled in red and is currently unchecked. Other options in the 'Accessibility' section include 'Always expand ALT text for images', 'Move system caret with focus/selection changes', 'Play system sounds', 'Reset text size to medium for new windows and tabs', and 'Reset zoom level for new windows and tabs'. The 'Browsing' section includes 'Automatically recover from page layout errors with Comp...', 'Close unused folders in History and Favorites*', 'Disable script debugging (Internet Explorer)', and 'Disable script debugging (Other)'. At the bottom, there are buttons for 'OK', 'Cancel', and 'Apply', and a message: 'Some settings are managed by your system administrator.'</p>

Figure 15

Step	Description
16	<p>The below mentioned setting applicable to IE9 and above. This is required for CRM screens to come up.</p> <p>Go to Tools-&gt; Compatibility Settings. Add the current domain or check on “Display intranet sites in Compatibility View” check-box as shown in Figure 16.</p>  <p>Figure 16</p>

- 17 The below mentioned 2 steps are required in case of scanning signature in SVS application needs to be done.

Click on “Custom Level...” button from Figure2 -> Go to “ActiveX controls and plug-ins” sub-title (refer Figure 3)

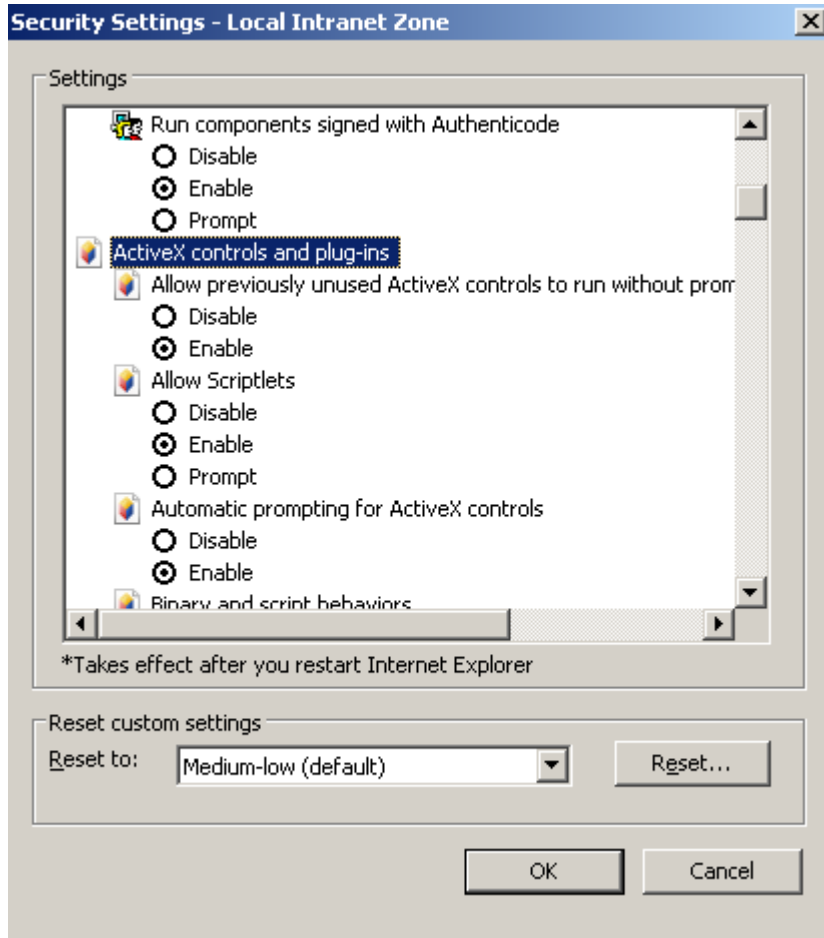


Figure 17

18 Mark the highlighted settings as “enabled”

1. Download unsigned ActiveX controls
2. Initialize and script ActiveX controls not marked as safe for scripting

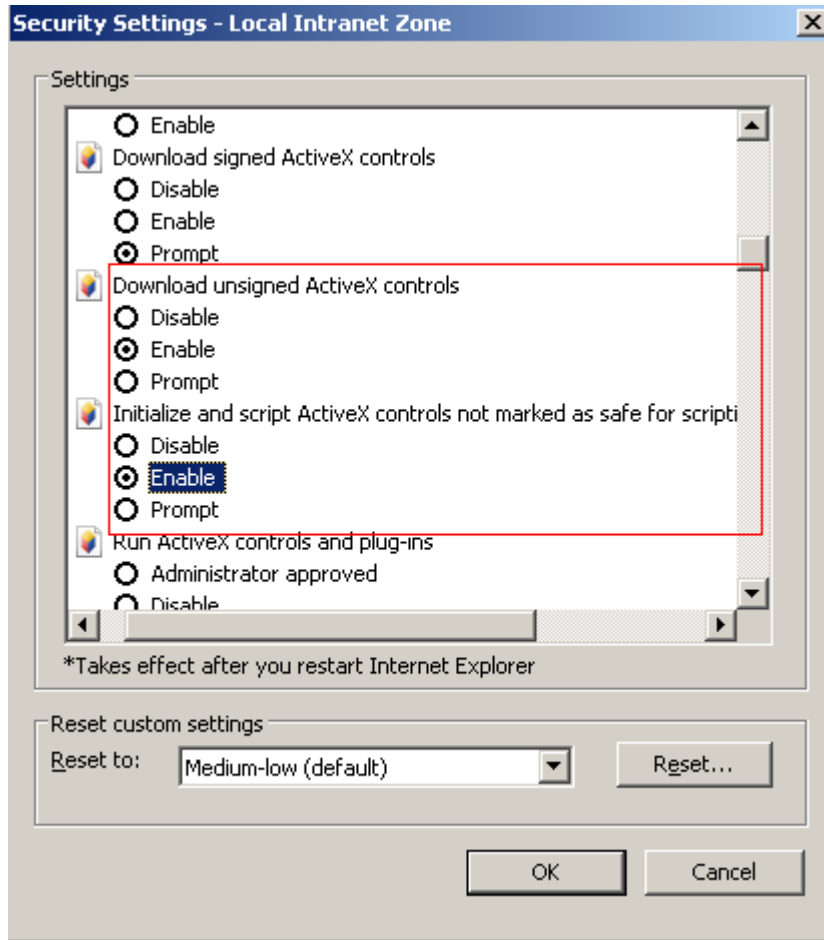


Figure 18

- 19 Below setting is required from IE9 onwards.  
Mark the highlighted settings as “disabled” under Security > custom settings

1. Enable XSS filter

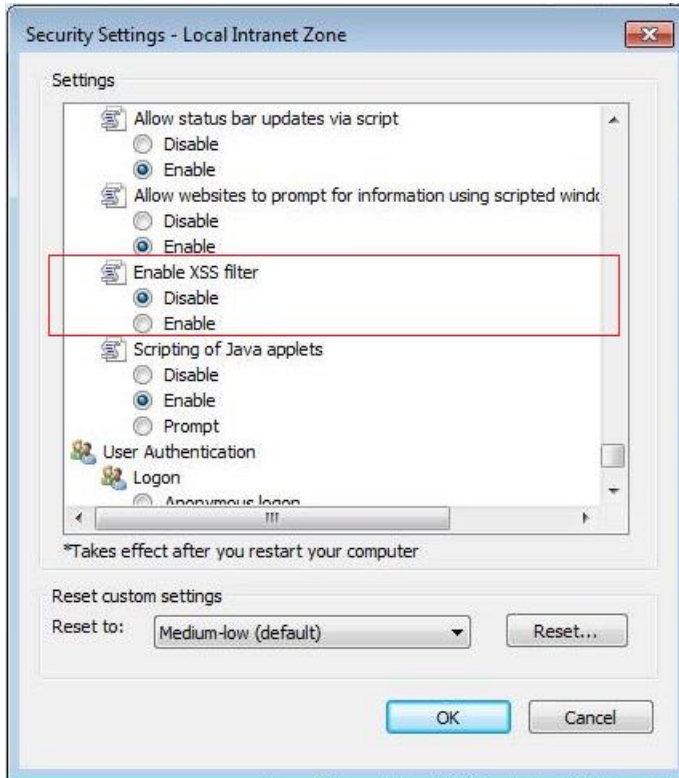


Figure 19

- 20 Below setting is required in Win8 desktop.  
Check box "Open Internet Explorer tiles on the desktop" to be checked.

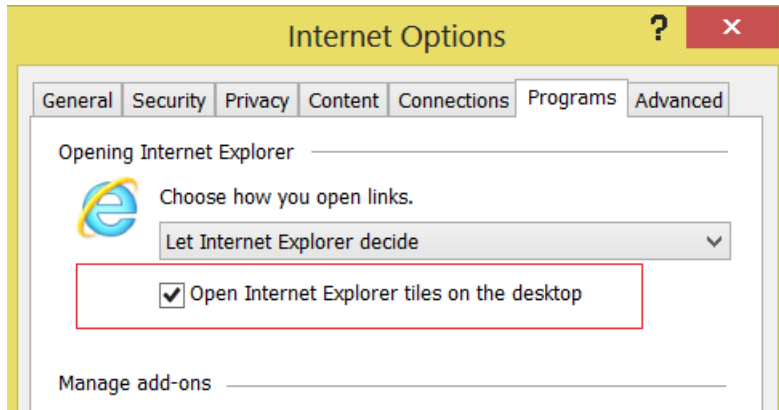


Figure 20

Finacle UBS