

Document Ref #LPT001

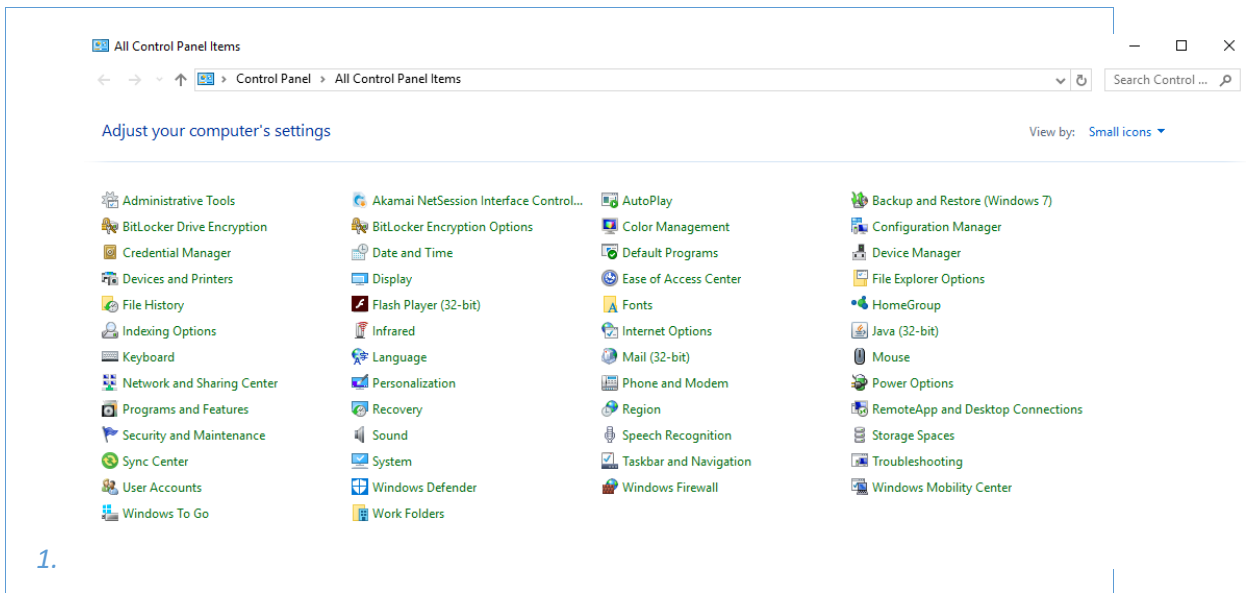
**SOP for configuring software
24 May 2018**

For any queries on this SOP, please Contact
Sachin.kadam@jppbonline.in OR Debasis.m@jppbonline.in

Laptop/Desktop configuration Steps

Check Java Installed or Not

Go to Control Panel -> Java (32-bit)



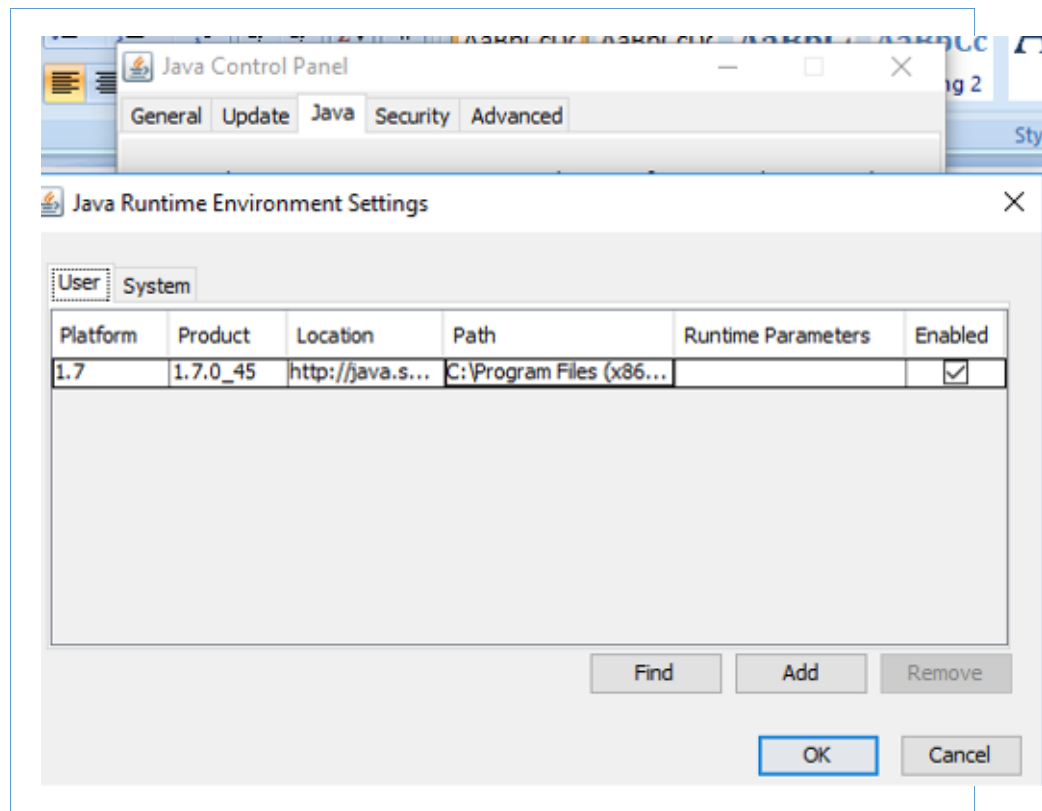
IF not installed download CBS setup folder under which we get required JAVA version with below Link

- <https://drive.google.com/open?id=1TDaHahcs2iIN1lyoptKSjhAx2BIIR0TRjre-7u45-windows-i586> ← Download this file.

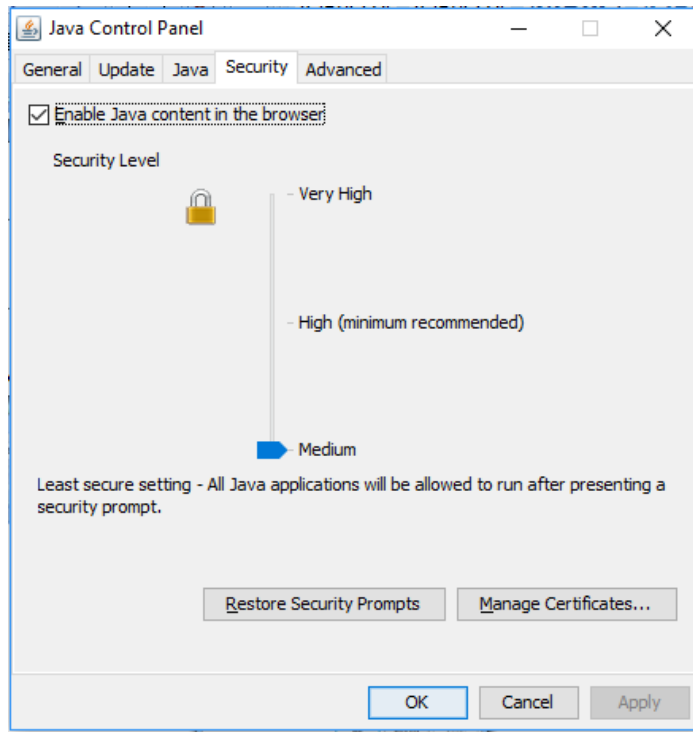
Click on the file and click Next to install Java.

Configuration Steps for Java

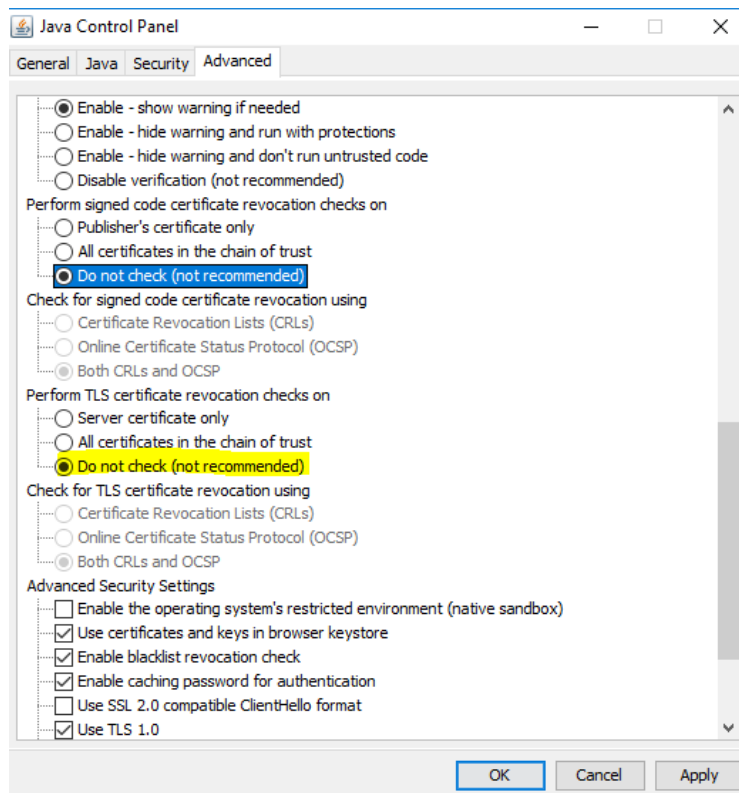
1. Go to Control Panel\All Control Panel Items
2. Click on Java (32bit)
3. Click on Java tab then click on view & make sure there is only one java



4. Now click on security tab and Enable the check box "Enable Java content in the browser"
5. Make sure security level is MEDIUM (if not then drag down the button to MEDIUM)
6. Click on OK



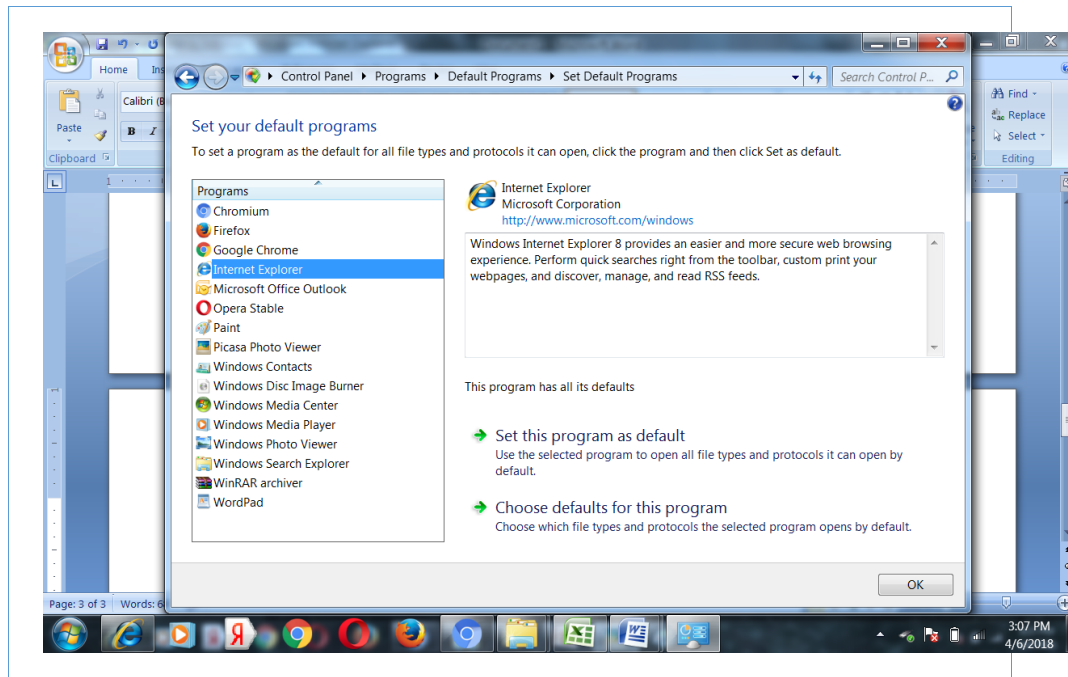
7. Go to Section Advanced and ensure that “Don’t Check” option is enabled for “Perform signed code certificate revocation checks on” and “Perform TLS Certificate revocation on” sections



8. Kindly use below path

[Control Panel\All Control Panel Items\Default Programs\Set Default Programs](#)

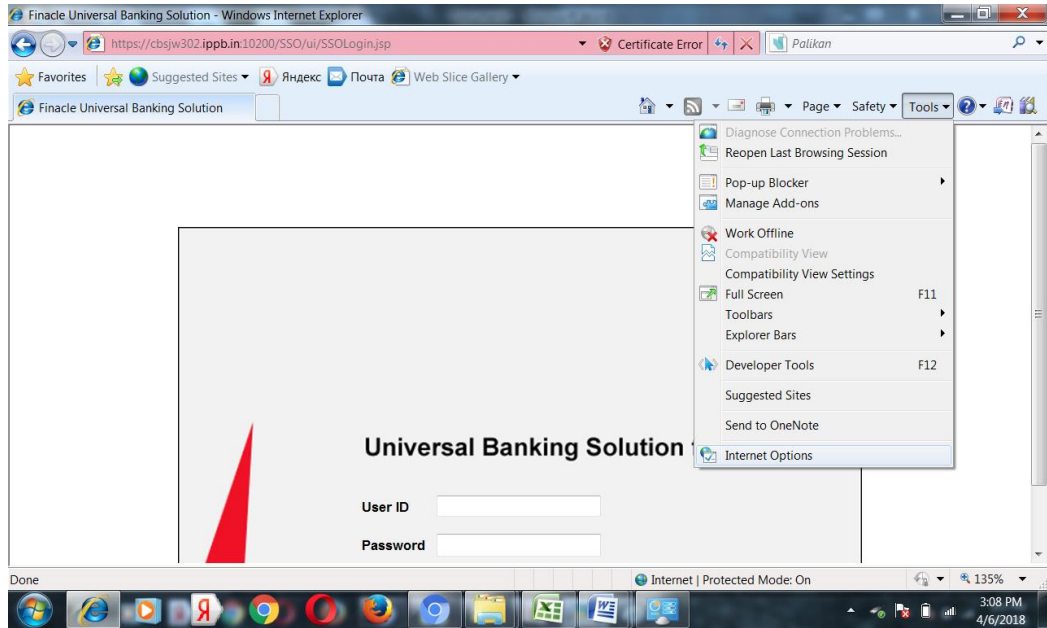
9. Now we need to set Internet Explorer as default program



10. Restart your System

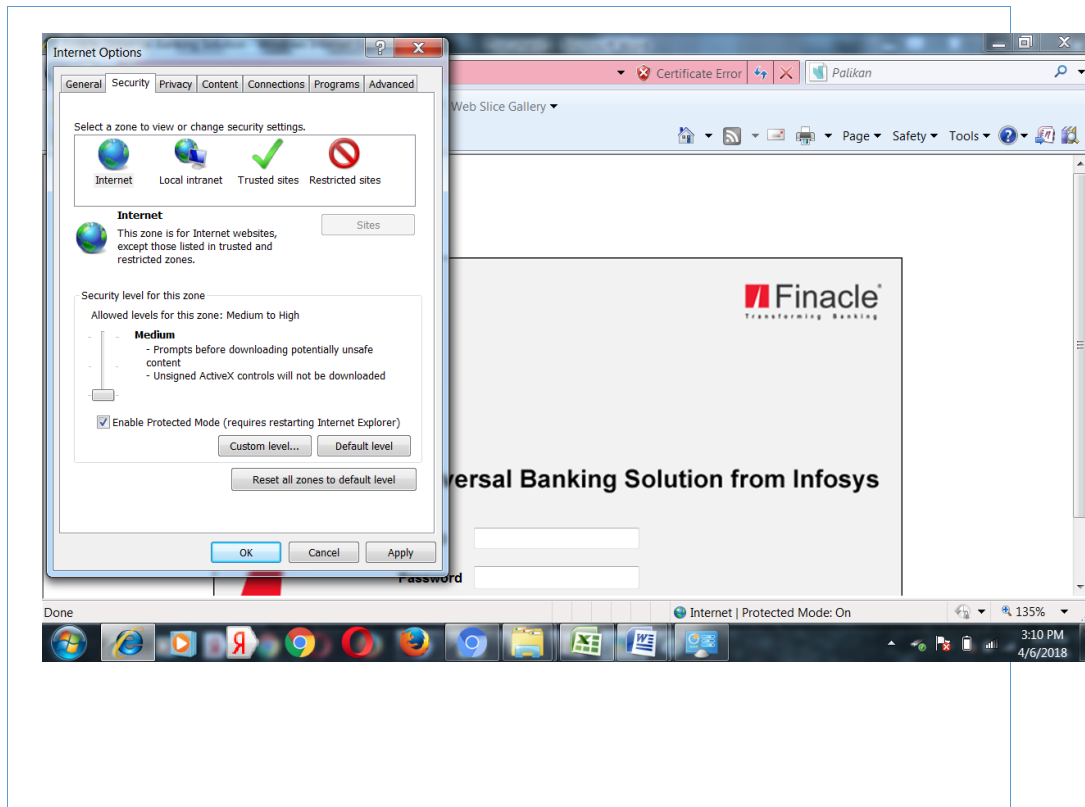
11. Now Click on Finacle shortcut

12. Click on TOOL tab than Click on Internet Option

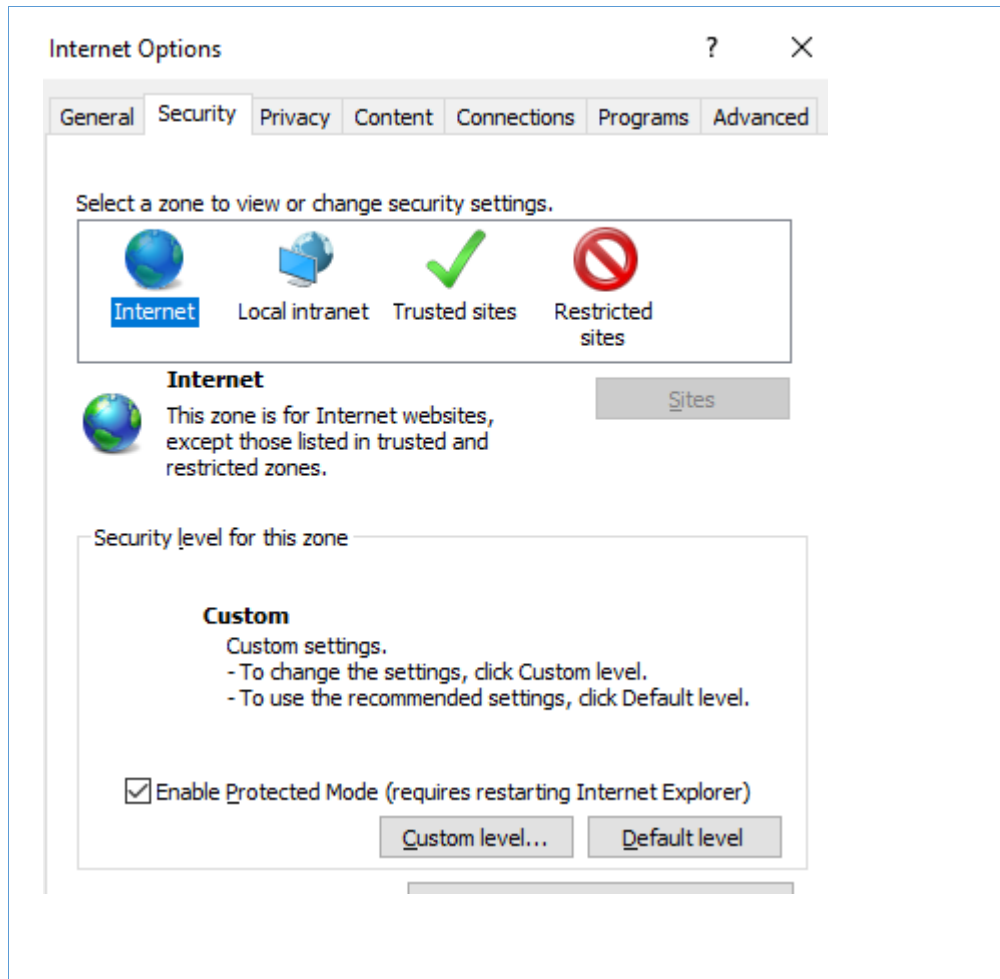


Go t

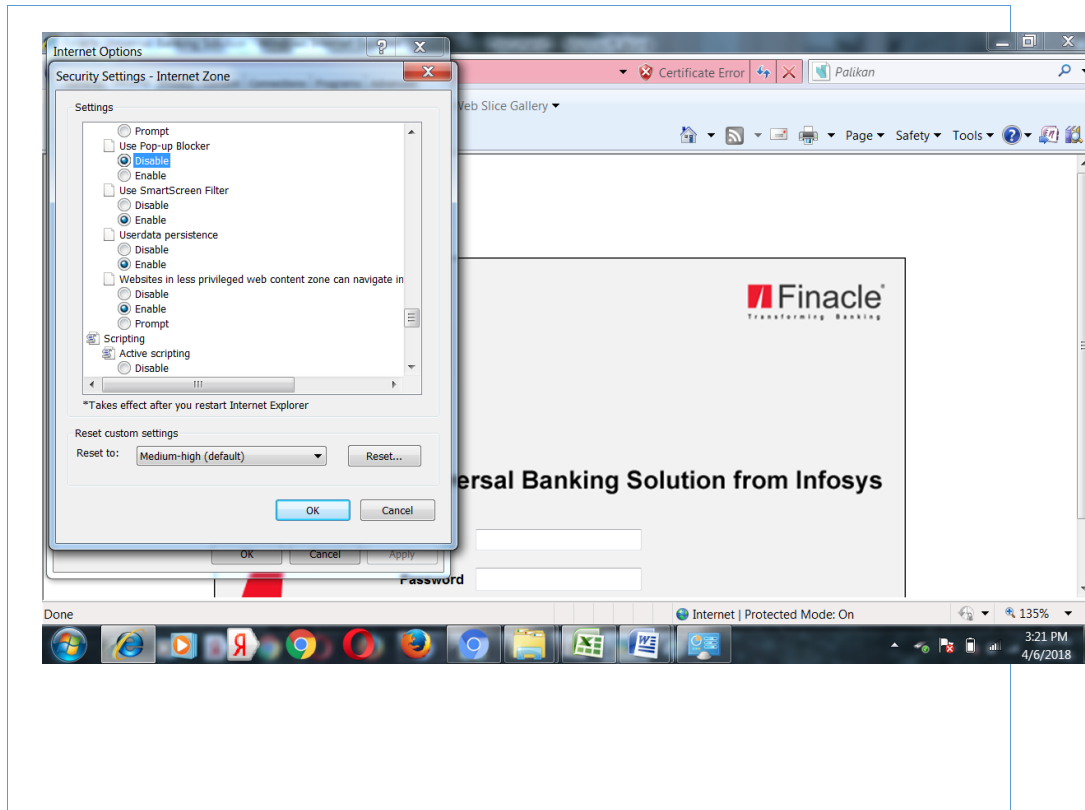
13. Select security tab



Click on internet icon



14. Click on custom level



15. Under setting we need to disable the POP-UP BLOCKER

16. Click on ok

17. Now we need to Repeat the 19,20 & 21 no. step for LOCAL INTRANET, TRUSTED SITES & RESTRICTED SITES

18. Now we need to click on trusted site under this click on sites tab and enter Finacle URL & Click on ADD

19. NOW CLICK ON FINACLE ICON & WE NEED TO ACCEPT & ALLOW ALL POPUP WHICH COMES WHEN WE ARE OPENING FINACLE

20. Access the below link.

<https://cbslb001.ippb.in:30200/SSO/ui/SSOLogin.jsp> -----IPPB CBS URL

21. Check below link for Bio-metric if it is accessible continue the installation of devices guided by the SOP for Registered Devices.

<http://acpl.in.net/> ---- for Biometric Devices

